



**LIFETIME  
WARRANTY**

Backed by a Lifetime Warranty, Sunex Impact Sockets are warranted against defects in materials and workmanship for the life of the product. This warranty does not apply to items that have been misused, abused, altered in any way, or worn out from use. Some Adapters, Reducers, and Extra Thin Wall Impact Sockets are sold with out of box warranty.

# IMPACT SOCKETS

Since 1984, we've led the market with our solution-based designs and quality materials. All of our Impact Sockets (low-profile, standard, deep, hex drivers, universal joint, specialty, and extensions/adapters) are backed by an industry-leading warranty, so you can rest easy knowing your sockets are guaranteed to perform.

# IMPACT SOCKETS

## HIGHEST QUALITY. HIGHEST STANDARDS.

### RADIUSED CORNERS

Focuses impact on fastener's flat surfaces, increasing torque and reducing wear and rounding to the fastener.

### DURABLE CR-MO STEEL

Precision manufactured with chrome-molybdenum steel for high-impact applications.

### HEAT TREATED / TEMPERED

Sockets are first heat treated to increase hardness and then tempered to maximize durability.



### SPECIALTY SOCKETS

Every job has its own challenges. We offer a wide selection of specialty sockets to handle anything the job calls for.

### METRIC

### SAE

1/4"  
DRIVE

3/8"  
DRIVE

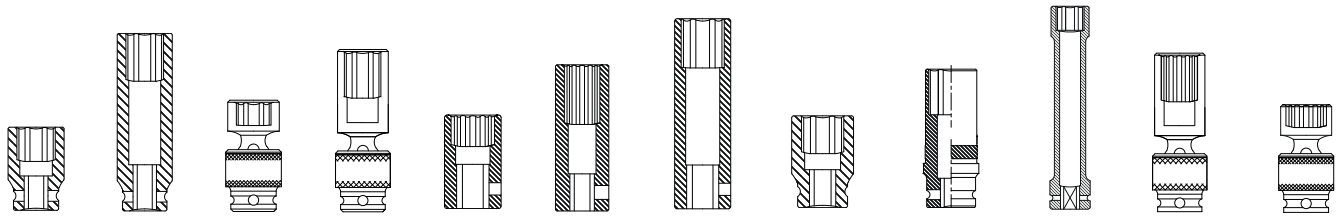
1/2"  
DRIVE

3/4"  
DRIVE

1"  
DRIVE

### NO-SKIP SIZE SPECTRUM

Sunex Impact Socket Sets include every size in the specification range: Largest to smallest, and everything in between.



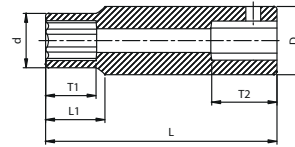
1/2" DR.

## 1/2" DRIVE INDIVIDUAL METRIC SOCKETS

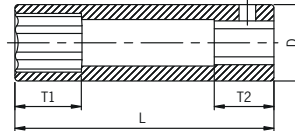
| SIZE   | STD.  | DEEP  | UNIV. | DEEP UNIV. | 12 PT. | 12 PT. DEEP | EXTRA THIN WALL DEEP | MAGNETIC | WHEEL PROTECT. | EXTRA LONG DEEP | 12 PT. DEEP UNIV. | 12 PT. UNIV. |
|--------|-------|-------|-------|------------|--------|-------------|----------------------|----------|----------------|-----------------|-------------------|--------------|
| METRIC | MODEL | MODEL | MODEL | MODEL      | MODEL  | MODEL       | MODEL                | MODEL    | MODEL          | MODEL           | MODEL             | MODEL        |
| 8mm    | 208M  | 208MD |       |            |        |             |                      |          |                | 208MXD          |                   |              |
| 9mm    | 209M  | 209MD |       |            | 209ZM  | 209ZMD      |                      |          |                | 209MXD          |                   |              |
| 10mm   | 210M  | 210MD | 210UM | 210UMD     | 210ZM  | 267210      |                      | 210MMG   |                | 210MXD          | 210MZUD           | 210ZUM       |
| 11mm   | 211M  | 211MD | 211UM | 211UMD     | 211ZM  | 267211      |                      | 211MMG   |                | 211MXD          | 211MZUD           | 211ZUM       |
| 12mm   | 212M  | 212MD | 212UM | 212UMD     | 212ZM  | 267212      |                      | 212MMG   |                | 212MXD          | 212MZUD           | 212ZUM       |
| 13mm   | 213M  | 213MD | 213UM | 213UMD     | 213ZM  | 267213      |                      | 213MMG   |                | 213MXD          | 213MZUD           | 213ZUM       |
| 14mm   | 214M  | 214MD | 214UM | 214UMD     | 214ZM  | 267214      |                      | 214MMG   |                | 214MXD          | 214MZUD           | 214ZUM       |
| 15mm   | 215M  | 215MD | 215UM | 215UMD     | 215ZM  | 267215      |                      | 215MMG   | 284915         | 215MXD          | 215MZUD           | 215ZUM       |
| 16mm   | 216M  | 216MD | 216UM | 216UMD     | 216ZM  | 267216      |                      | 216MMG   |                | 216MXD          | 216MZUD           | 216ZUM       |
| 17mm   | 217M  | 217MD | 217UM | 217UMD     | 217ZM  | 267217      | 2617                 | 217MMG   | 284917         | 217MXD          | 217MZUD           | 217ZUM       |
| 18mm   | 218M  | 218MD | 218UM | 218UMD     | 218ZM  | 267218      |                      | 218MMG   |                | 218MXD          | 218MZUD           | 218ZUM       |
| 19mm   | 219M  | 219MD | 219UM | 219UMD     | 219ZM  | 267219      | 2619                 | 219MMG   | 284919         | 219MXD          | 219MZUD           | 219ZUM       |
| 20mm   | 220M  | 220MD | 220UM | 220UMD     | 220ZM  | 267220      |                      | 220MMG   |                | 220MXD          | 220MZUD           | 220ZUM       |
| 21mm   | 221M  | 221MD | 221UM | 221UMD     | 221ZM  | 267221      | 2621                 | 221MMG   | 284921         | 221MXD          | 221MZUD           | 221ZUM       |
| 22mm   | 222M  | 222MD | 222UM | 222UMD     | 222ZM  | 267222      | 2622                 |          |                | 222MXD          | 222MZUD           | 222ZUM       |
| 23mm   | 223M  | 223MD | 223UM | 223UMD     | 223ZM  | 267223      | 2623                 |          |                | 223MXD          | 223MZUD           | 223ZUM       |
| 24mm   | 224M  | 224MD | 224UM | 224UMD     | 224ZM  | 267224      |                      |          |                | 224MXD          | 224MZUD           | 224ZUM       |
| 25mm   | 225M  | 225MD |       |            | 225ZM  | 225ZMD      |                      |          |                | 225MXD          |                   |              |
| 26mm   | 226M  | 226MD |       |            | 226ZM  | 226ZMD      |                      |          |                | 226MXD          |                   |              |
| 27mm   | 227M  | 227MD |       |            | 227ZM  | 227ZMD      |                      |          |                | 227MXD          |                   |              |
| 28mm   | 228M  | 228MD |       |            | 228ZM  | 228ZMD      |                      |          |                | 228MXD          |                   |              |
| 29mm   | 229M  | 229MD |       |            | 229ZM  | 229ZMD      |                      |          |                | 229MXD          |                   |              |
| 30mm   | 230M  | 230MD |       |            | 230ZM  | 230ZMD      |                      |          |                | 230MXD          |                   |              |
| 31mm   | 231M  | 231MD |       |            | 231ZM  | 231ZMD      |                      |          |                | 231MXD          |                   |              |
| 32mm   | 232M  | 232MD |       |            | 232ZM  | 232ZMD      |                      |          |                | 232MXD          |                   |              |
| 33mm   | 233M  | 233MD |       |            | 233ZM  | 233ZMD      |                      |          |                | 233MXD          |                   |              |
| 34mm   | 234M  | 234MD |       |            | 234ZM  | 234ZMD      |                      |          |                | 234MXD          |                   |              |
| 35mm   | 235M  | 235MD |       |            | 235ZM  | 235ZMD      |                      |          |                | 235MXD          |                   |              |
| 36mm   | 236M  | 236MD |       |            | 236ZM  | 236ZMD      |                      |          |                | 236MXD          |                   |              |
| 37mm   |       |       |       |            |        |             |                      |          |                | 237MXD          |                   |              |
| 38mm   |       |       |       |            |        |             |                      |          |                | 238MXD          |                   |              |

## 1/2" DR. DEEP 6 POINT METRIC

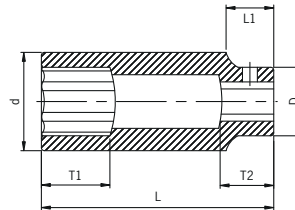
| ITEM  | SIZE | SHAPE | D    | D  | T1 | T2 | L1 | L  |
|-------|------|-------|------|----|----|----|----|----|
| 208MD | 8mm  | A     | 14.5 | 22 | 14 | 18 | 17 | 78 |
| 209MD | 9mm  | A     | 15.6 | 22 | 14 | 18 | 17 | 78 |
| 210MD | 10mm | A     | 16.7 | 22 | 14 | 18 | 17 | 78 |
| 211MD | 11mm | A     | 18   | 22 | 14 | 18 | 17 | 78 |
| 212MD | 12mm | A     | 19   | 22 | 14 | 18 | 17 | 78 |
| 213MD | 13mm | A     | 20.2 | 24 | 14 | 18 | 17 | 78 |
| 214MD | 14mm | A     | 21.5 | 24 | 17 | 18 | 17 | 78 |
| 215MD | 15mm | B     | /    | 24 | 17 | 18 | /  | 78 |
| 216MD | 16mm | B     | /    | 25 | 17 | 18 | /  | 78 |
| 217MD | 17mm | B     | /    | 26 | 17 | 18 | /  | 78 |
| 218MD | 18mm | B     | /    | 26 | 17 | 18 | /  | 78 |
| 219MD | 19mm | B     | /    | 28 | 17 | 18 | /  | 78 |
| 220MD | 20mm | B     | /    | 30 | 19 | 18 | /  | 78 |
| 221MD | 21mm | B     | /    | 30 | 24 | 18 | /  | 78 |
| 222MD | 22mm | B     | /    | 32 | 24 | 18 | /  | 78 |
| 223MD | 23mm | B     | /    | 32 | 24 | 18 | /  | 78 |
| 224MD | 24mm | B     | /    | 34 | 24 | 18 | /  | 78 |
| 225MD | 25mm | B     | /    | 36 | 36 | 18 | /  | 78 |
| 226MD | 26mm | B     | /    | 36 | 24 | 18 | /  | 78 |
| 227MD | 27mm | B     | /    | 38 | 24 | 18 | /  | 78 |
| 228MD | 28mm | B     | /    | 38 | 24 | 18 | /  | 78 |
| 230MD | 30mm | C     | 42   | 38 | 24 | 18 | 15 | 78 |
| 231MD | 31mm | C     | 44   | 38 | 24 | 18 | 15 | 78 |
| 232MD | 32mm | C     | 44   | 38 | 24 | 18 | 15 | 78 |
| 233MD | 33mm | C     | 44   | 38 | 24 | 18 | 15 | 78 |
| 234MD | 34mm | C     | 45   | 38 | 34 | 18 | 15 | 78 |
| 236MD | 36mm | C     | 50   | 38 | 34 | 18 | 15 | 78 |



A



B



C