

Adapters

3824-06

Bosch ESI[truck] Trailer Adapter

7-pin PLC adapter for trailer ABS diagnostics

- ▶ J2497 Power Line Carrier (PLC) communication compatible
- ▶ Allows direct connection to trailer
- ▶ Works with tractor present or without the tractor present
 - External power supply is necessary without tractor
- ▶ Bosch ESI[truck] trailer ABS coverage for Bendix, Haldex, Meritor Wabco and Wabash systems
- ▶ Compatible with 3824, 3824BSC, 3823 and 3823BSC diagnostic tools



3824-10

Bosch ESI[truck] 9 Pin Adapter Cable High Speed Comm

- ▶ 9-pin heavy-duty diagnostic connector
- ▶ High-speed diagnostics communication
- ▶ Backward compatible with older black 9-pin vehicle connectors
- ▶ Compatible with 3824, 3824BSC, 3823 and 3823BSC diagnostic tools



License Renewal

3824-08

Bosch ESI[truck] License Renewal

12-Month Security Card includes one year of advanced diagnostic software for 3824, 3824BSC

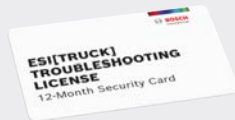


Subscription

3824-08R

ESI[truck] Troubleshooting and Repair Subscription

- ▶ For technicians of all experience levels, this software bridges the gap between diagnosing and repairing the vehicle
- ▶ Troubleshooting procedures by trouble codes: after reading or entering DTCs, users are guided through steps to troubleshoot the vehicle
- ▶ Troubleshooting procedures by symptoms: users can select vehicle symptom – example: “Engine oil pressure too low” – and they are guided through steps to troubleshoot the vehicle
- ▶ Technical Service Bulletins (TSBs): documents that explain service procedures for particular makes/models



Extended service contracts available for all ESI[truck] software packages

1, 2, & 3 year service contracts available. Contact ToolGuard for more information at 1-800-233-7055

High-pressure leak detection for heavy-duty system diagnostics & repair

169950000

HPT 500 Features

- ▶ Produce leak detection "smoke" at higher pressure than standard machines (up to 20psi) for higher pressure systems
- ▶ Higher flow rate fills the system with smoke up to 5 times faster
- ▶ Ideal for finding leaks in exhaust after-treatment systems
- ▶ Test entire system, from intake to exhaust, in one 15 minute test
- ▶ High-pressure and large volume systems found in heavy-duty truck & turbocharged passenger vehicles



1699500001

HPK 200 Accessory Kit for HD and Medium Duty Applications

- ▶ Cooling system adapter
- ▶ SmokeMeister wands
- ▶ Exhaust stack retention hoop
- ▶ Power intake adapter 3.9" (2 included)
- ▶ Accessory storage case
- ▶ Halogen inspection light
- ▶ Vapor producing fluid
- ▶ Ball-end hex point L key
- ▶ Oxygen sensor port adapter
- ▶ Temperature sensor port adapter
- ▶ Pressure sensor port adapter
- ▶ Block off coupler
- ▶ Detachable 12V DC power cable
- ▶ Quick start guide



HDS 250 Heavy-Duty Scan Tool for Class 4-8 Vehicles

Ideal for heavy-duty shops as a second diagnostic tool and mobile repair trucks. Cost-effective solution for aftermarket shops in need of heavy-duty coverage

HDS 250 Features

- ▶ Brilliant Color Display
- ▶ Rugged enclosure for durability
- ▶ Class 4 – Class 8 truck coverage featuring “Automatic Protocol Search”
- ▶ HD J1587 / J1708 and J1939 CAN, Engine, Transmission/ABS coverage and more
- ▶ Global OBD II Quick Test
- ▶ Works on 12V and 24V systems
- ▶ Gasoline and diesel engine coverage
- ▶ Read and clear diagnostic trouble codes
- ▶ Live vehicle data includes
 - Engine speed
 - Engine ECU temperature
 - Percent acceleration pedal position
 - Engine intercooler temperature
 - Engine coolant temperature
 - Battery voltage
 - Alternator voltage output
 - Ambient air temperature
 - Air inlet temperature
- ▶ On-screen definitions of diagnostic trouble codes

1699200240



HDS 250 Includes

HD Scan tool, 9 Pin Deutsch Cable, 6 Pin Deutsch Cable, 16 Pin HD/OBD II Cable, USB Cable, Quick Start Guide, Carrying Case and 1-Year Warranty.

