

# Air Filters & Regulators

## Brass Air Regulator AES-203

Increase or decrease pressure as the tool and job dictates. Installs in-line at the tool for convenient air flow adjustment. Thumb screw knob for quick and easy air flow adjustment. Brass construction impervious to heat, cold, or rust.

- Quick and easy air flow adjustment
- Brass construction will not rust



HANG-UP CARD

Specifications	
Air Inlet:	1/4" NPT (M)
Air Outlet:	1/4" NPT (F)

## Quick Adjust Air Regulator AES-872

Within about 2-1/2 turns, the precision tapered valve will go from fully opened to fully closed. The knob is large, easy to handle and infinitely adjustable. Female swivel thread allows simple installation.

- Quick and easy air flow adjustment
- Swivel female thread



HANG-UP CARD

Specifications	
Air Inlet:	1/4" NPT (M)
Air Outlet:	1/4" NPT (F)

## Swivel Air Regulator AES-1827

Air regulator swivels in two places, keeping the air hose straight at all times, no matter what position the air tool is held! Use directly on air tool or on a quick-change adapter.



- Stop fighting twisted air hoses!
- 360° Swivels in two places
- Regulate air pressure at the tool

360° Swivel

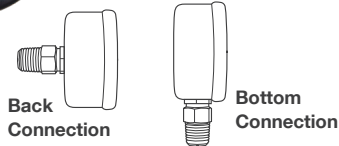
HANG-UP CARD

Specifications	
Air Inlet:	1/4" NPT (M)
Air Outlet:	1/4" NPT (F)

## 160psi Air Pressure Gauges

Highly accurate, clear print, easy to read pressure gauges come in various sizes and connection configurations to meet your application needs!

INDIVIDUALLY BOXED



SKU	Connection	Dial Diameter	Connection Configuration
AES-1101	1/8" NPT	1-1/2"	Back Connection
AES-1112	1/4" NPT	2"	Back Connection
AES-1113	1/8" NPT	2"	Bottom Connection
AES-1114	1/8" NPT	2"	Bottom Connection
AES-1115	1/4" NPT	2"	Bottom Connection

## Quick Adjust Air Regulator with 160psi Gauge AES-882

A body shop favorite! Same great function as the AES-872 but with a built-in 160 PSI pressure gauge.

- Easy to read 160psi gauge
- Swivel female thread



HANG-UP CARD

Specifications	
Air Inlet:	1/4" NPT (M)
Air Outlet:	1/4" NPT (F)

## Air Regulator with 160psi Gauge AES-880

Heavy duty blue anodized aluminum body with easy adjust knob and 160 PSI pressure gauge.

HANG-UP CARD

Specifications	
Air Inlet:	1/4" NPT (F)
Air Outlet:	1/4" NPT (F)



## Diaphragm Air Regulator with 60psi Gauge AES-878

Designed to be used on all spray guns including HVLP. Lightweight construction includes full diaphragm regulation to supply exact and consistent pressure at the spray gun, eliminating surges. Push-to-lock knob prevents accidental pressure changes.

- Precise air pressure control
- Easy to read 60psi gauge

HANG-UP CARD

Specifications	
Air Inlet:	1/4" NPT (F)
Air Outlet:	1/4" NPT (F)

## Diaphragm Air Regulator with 180psi Gauge AES-875

Designed to be used on all spray guns including HVLP. Lightweight construction includes full diaphragm regulation to supply exact and consistent pressure at the spray gun, eliminating surges. Push-to-lock knob prevents accidental pressure changes.

- Precise air pressure control
- Easy to read 180psi gauge

HANG-UP CARD

Specifications	
Air Inlet:	1/4" NPT (M)
Air Outlet:	1/4" NPT (F)



## Disposable Spray Gun Air Filters

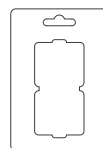
Disposable compact air filter removes moisture and impurities from air lines before it reaches the spray gun. The super sensitive filter will effectively remove oil, aerosols, smoke, condensed moisture and virtually all solid particles. Available in bright "neon" orange, yellow and green. Colors selected at random.

- Can be used with HVLP spray guns
- Significant protection without pressure drop

Specifications	
Air Inlet:	1/4" NPT (M)
Air Outlet:	1/4" NPT (F)
Max. Pressure:	125 PSI



Single  
AES-323  
1 Air Filter  
HANG-UP CARD



2 Pack  
AES-323-2  
2 Air Filters  
HANG-UP CARD



25pc Display  
AES-323-25  
25 Air Filters (Display)

## In-Line Air/Water Separator AES-320

Unique bronze filter separates water from air at the gun. Allows painter to shoot dry; eliminates water spots. Clear reservoir shows accumulated water taken out of air line. Button release valve allows for easy disposal of accumulated liquid.

HANG-UP CARD

Specifications	
AES-321	Replacement Filter Element



Specifications	
Air Inlet:	1/4" NPT (M)
Air Outlet:	1/4" NPT (F)

## In-Line Safety Air Filter AES-328

High tech filter element actually blocks water moisture and other impurities even when totally saturated. As the element becomes completely saturated, the flow of air stops, providing a fail-safe check against water contamination. Simply unscrew filter housing to install replacement filter element. Compact and lightweight – only 3.5" long and 3.2oz.

HANG-UP CARD

Specifications	
AES-329	Replacement Filter Element



Specifications	
Air Inlet:	1/4" NPT (F)
Air Outlet:	1/4" NPT (F)

## Mini In-Line Air Filter AES-1030

Tiny in-line filter does the job of a larger unit without getting in the way. Eliminates dust and other air line contaminants without a loss of air pressure.

HANG-UP CARD

Specifications	
Air Inlet:	1/4" NPT (M)
Air Outlet:	1/4" NPT (F)



## 3-in-1 Air Manifolds

Accepts three 1/4" air hoses or air couplers. Mount to air pipe at workbench or overhead.



HANG-UP CARD

Specifications	
Thread Size:	1/4" NPT (F)
Dimensions:	3.75" x 0.75" x 0.75"
Material:	Aluminum



HANG-UP CARD

Specifications	
Thread Size:	1/4" NPT (F)
Diameter:	1-1/2"
Material:	Brass